

Project:
Project number:

Created on: 2010-04-20
Created by: Long, Scott



Technical data
Submersible sewage pump

FA 10.33E

with motor
T 17-4/8KEx

Tender text

Submersible Sewage Pump as submersible, single-stage block unit in stationary, vertical installation to pump untreated sewage which doesn't attack the pump neither chemically nor mechanically. Pump with radially arranged discharge piece and axial pump intake. Service-friendly design by separated motor and pump casing. Pumping values to be guaranteed as per ISO 9906 Annex A

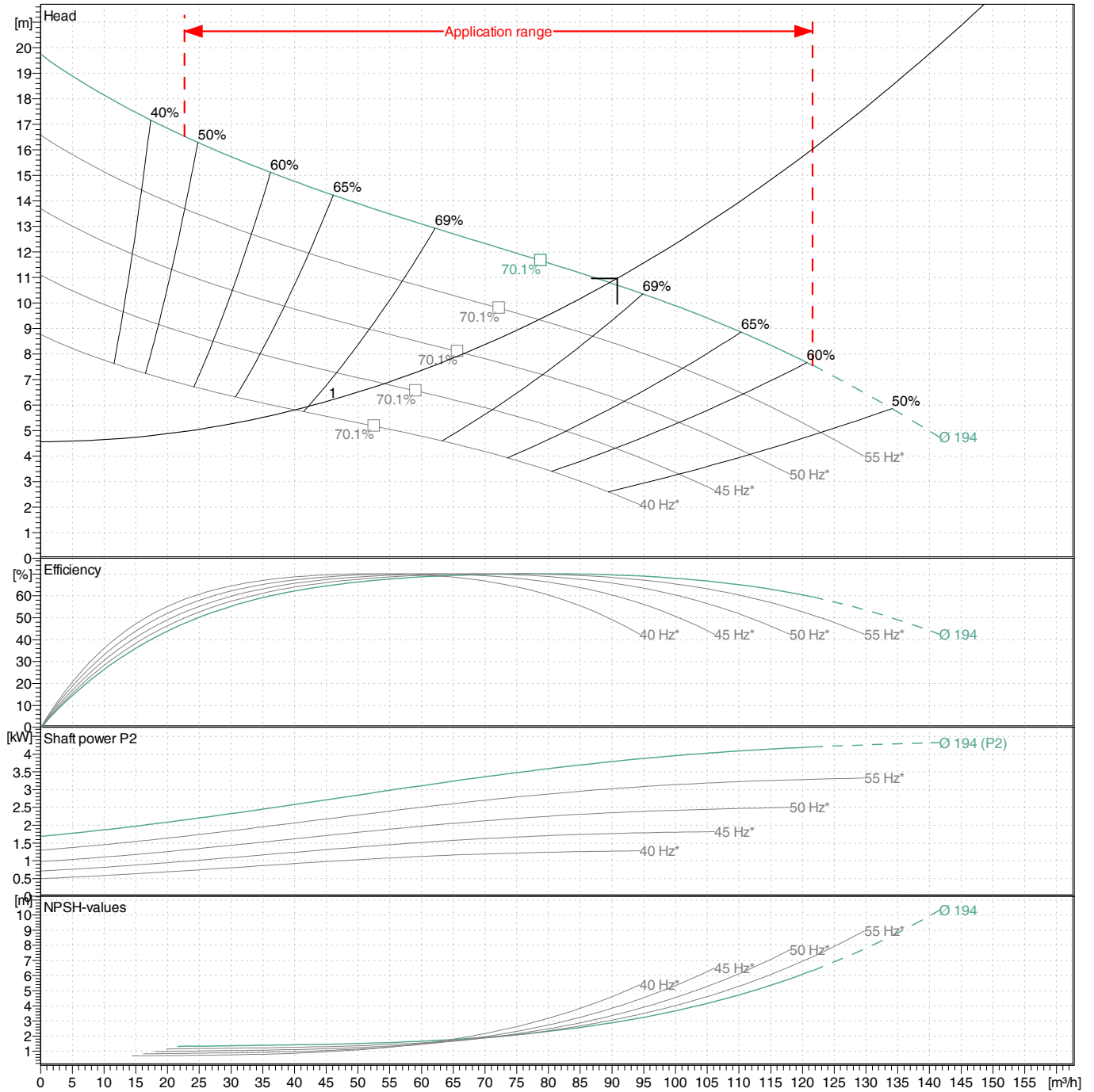
Submersible motor in pressure-resistant design, double mechanical shaft seal in EMU block design, as well as separate sealing chamber with medical white oil. Motor chamber dry. Sealing of the motor at the shaft by a double, wear-resistant mechanical shaft seal independent of the direction of rotation entirely made of silicon-carbide as closed unit, in stainless steel sealing cartridge. Both seals in the sealing cartridge are cooled and lubricated by medical white oil. Power supply cable and control cable with longitudinally tight cable trumpet, cores embedded in casting resin and soldered strands as additional protection against penetrating humidity by capillary action. Protection of the motor winding by thermistors installed. Both closed ball bearings are maintenance-free and filled with high-quality-grease. Possibility for retrofitting a moisture probe by means of a pencil electrode as protection against penetrating humidity. All casing parts are of cast iron. Shaft and connecting elements are of stainless steel.

Performance curves
Submersible sewage pump

FA 10.33E

with motor
T 17-4/8KEx

Power data referred to: Water, pure [100%]; 20°C; 0.9983kg/dm³; 1.005mm²/s
Tolerance as per ISO 9906 / Annex A.2

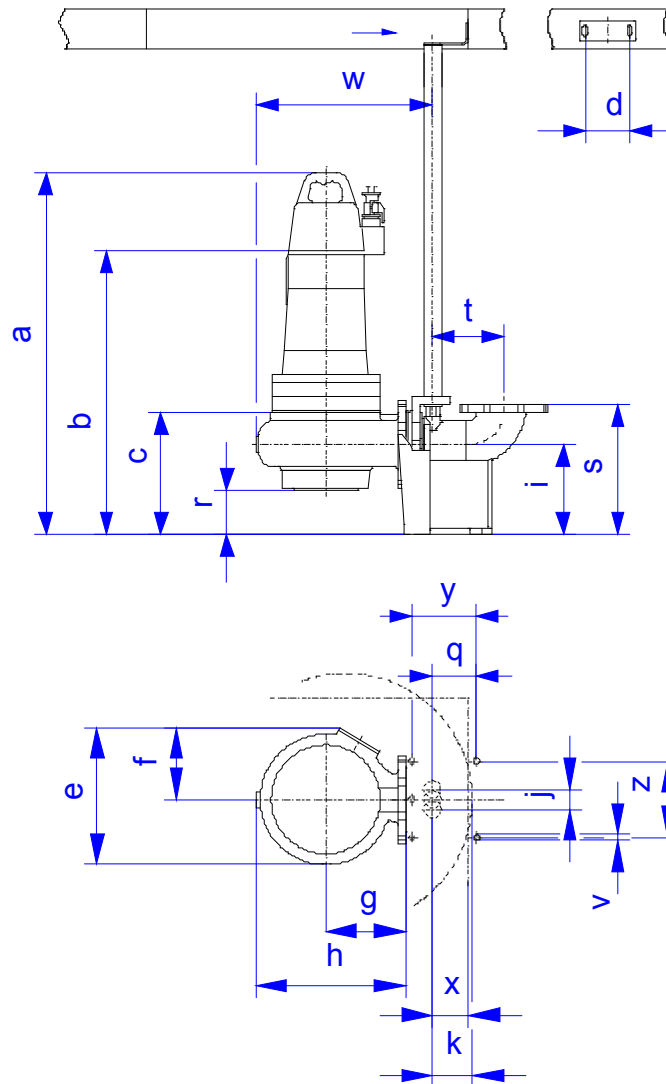


Pump			Duty point data		
Impeller Ø	designed	194 mm	Volume flow	89.6	m ³ /h
Nominal speed		1740 1/min	Head	10.8	m
Frequency		60 Hz	Shaft power	P ₂ 3.8	kW
Impeller type		Single-channel	Pump efficiency	69.6	%
Motor			Power input	P ₁ 4.8	kW
Rated power		4.2 kW	Required pump NPSH	2.9	m
Sel. explosion protection		FM	Speed	1706	1/min

Technical data
Submersible sewage pump

FA 10.33E

with motor
T 17-4/8KEx



Dimensions in mm				Connections
a	704	r	131	Suction port Size3 PN10
b	632	s	325	
c	294	t	176	
d	110	v	15	Discharge port Size4 PN10
e	374	w	527	
f	197	x	90	
g	269	y	160	Suspension device DN100/2RK 51.17585
h	462	z	190	
i	225			
j	50			
k	98			
q	109			